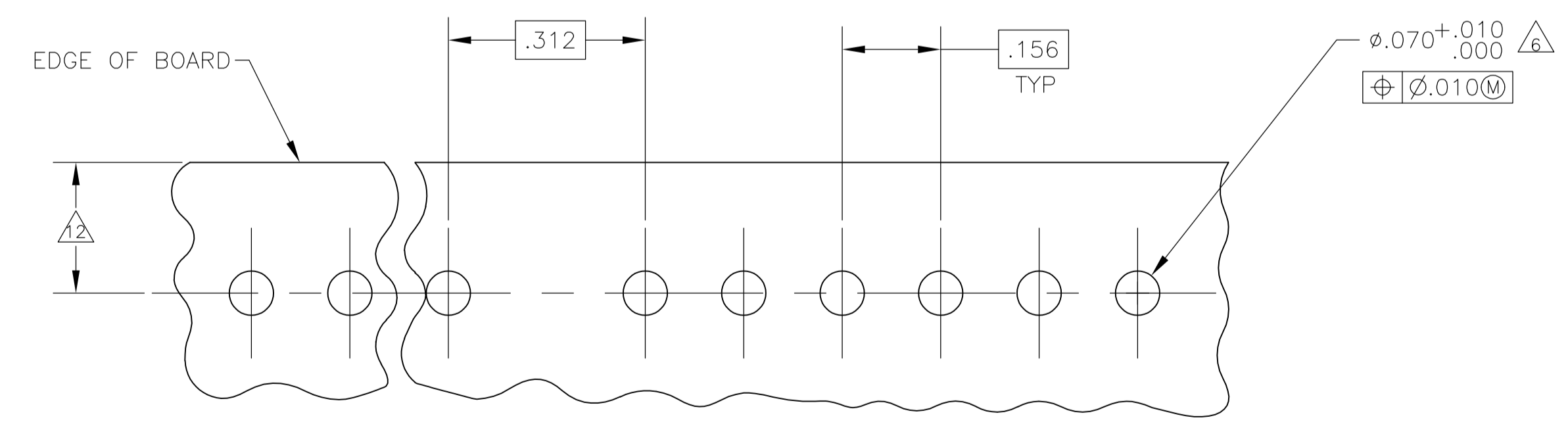
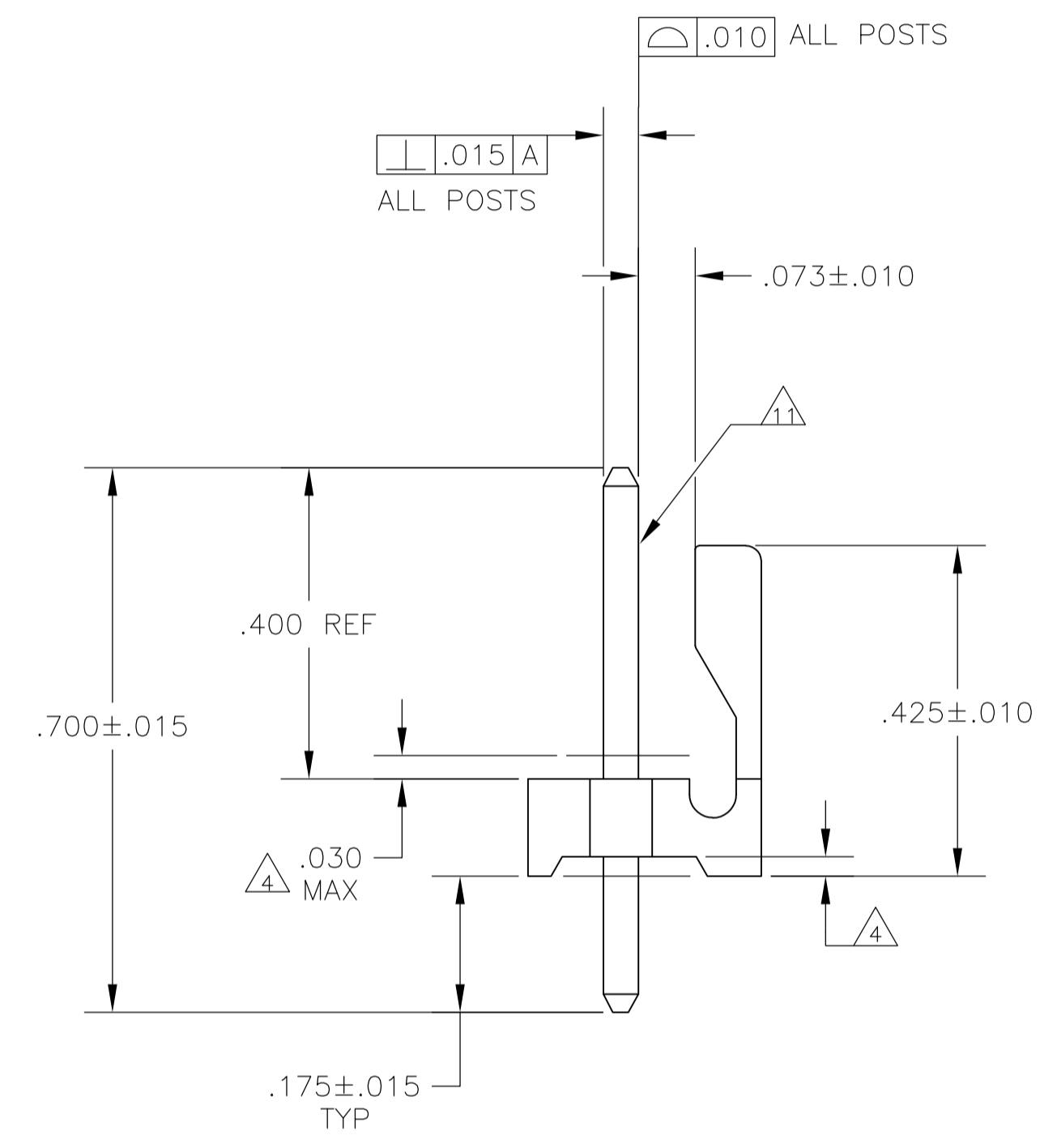
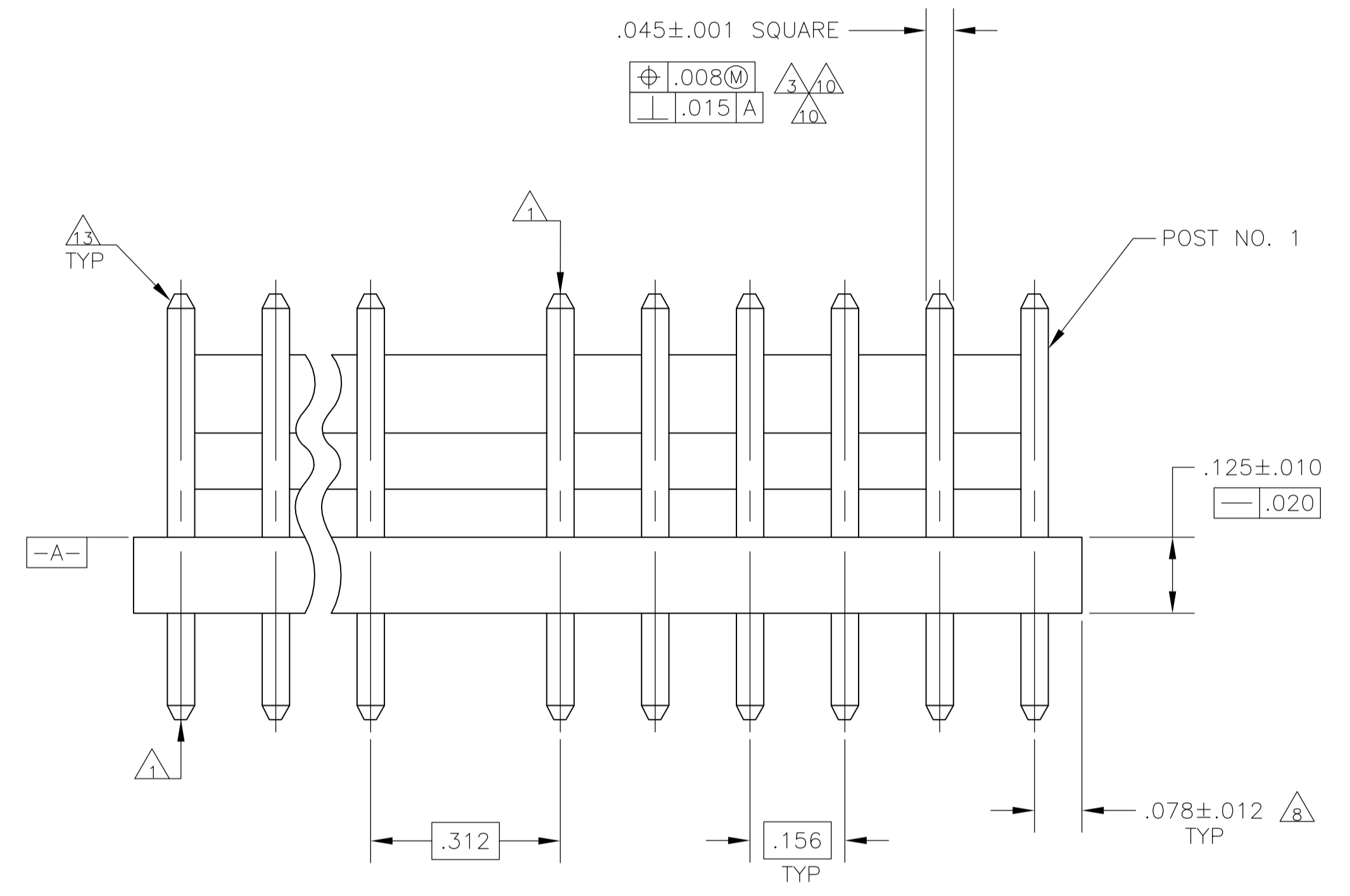
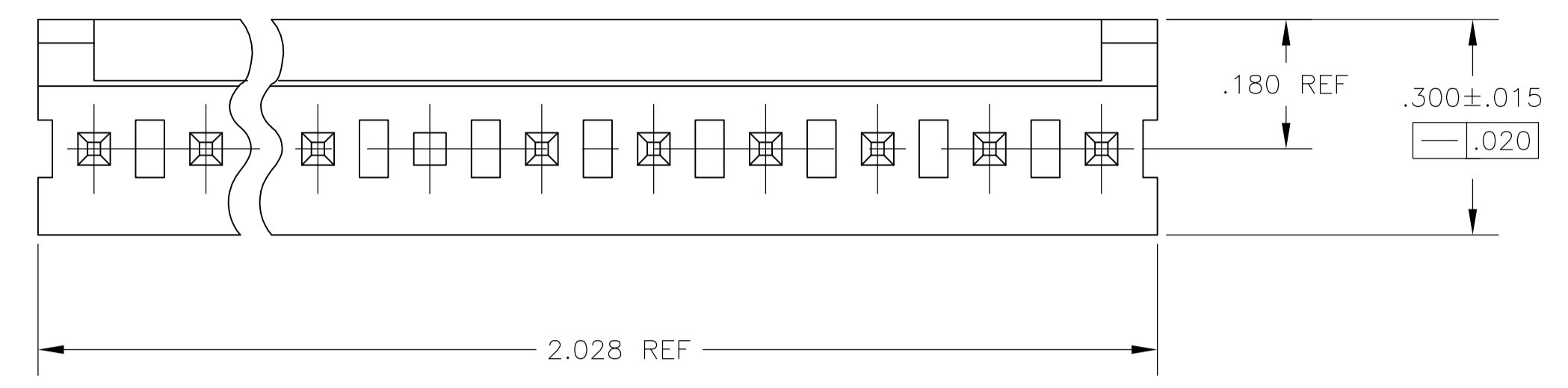


LOC		DIST		REVISIONS			
CM	54	REV	DATE	BY	APP'D	DATE	BY
A1		REVISED PER ECO-08-00051	03MAR08	HMR	DB		

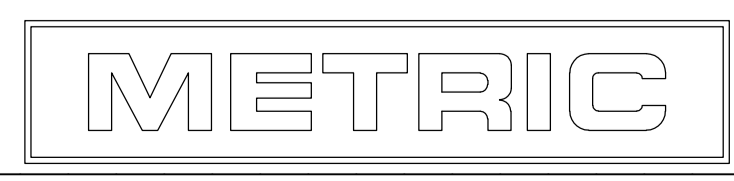


RECOMMENDED MOUNTING HOLE PATTERN $\Delta 2$
 FOR .063 THICK P.C. BOARD

- $\Delta 1$ POST TO WITHSTAND 13 NEWTONS (3LBS.) MIN. AXIAL FORCE IN BOTH DIRECTIONS SHOWN WITHOUT DISLODGING.
- $\Delta 2$ TOLERANCES APPLY TO SOLDER SIDE OF BOARD.
- $\Delta 3$ MEASURED AT SURFACE \square -A-
- $\Delta 4$ PLASTIC FLASH PERMITTED IN THIS AREA.
- 5 PARTS COMPLY WITH AMP SOLDERABILITY SPEC. NO. 109-11-2.
- $\Delta 6$ ONE HOLE MAY BE UNDERSIZED (.065/.060 DIA.) FOR ASSEMBLY RETENTION DURING WAVE SOLDERING.
- $\Delta 7$ MATERIAL: HEADER - THERMOPLASTIC POLYESTER GLASS-FILLED 94V-0(NATURAL)
POST - COPPER ALLOY (TIN PLATED)
- $\Delta 8$ COORDINATE DIMENSION APPLIES FROM CENTER OF ACTUAL FEATURE.
- 9 PLASTIC BURRS CAUSED BY CUT-OFF TOOLING ARE PERMITTED WITHIN THE MAXIMUM TOLERANCE ENVELOPE.
- $\Delta 10$ POST TO BE MEASURED WHEN STRIP IS HELD FLAT.
- $\Delta 11$ POST MUST WITHSTAND TWO 90° BENDS AGAINST EXTRUSION WITHOUT BREAKING.
- $\Delta 12$ DIMENSION SHOULD BE .175 MIN WHEN MATING WITH A MTA-156 CONNECTOR ASSEMBLY OR A SL-156 CONNECTOR ASSEMBLY.
- $\Delta 13$ PIN BURR OF .005 MAX. VERTICAL AND .003 MAX. HORIZONTAL PERMITTED AT POST TIPS ON BOTH ENDS.

IN	MM	IN	MM
.065	1.65		
.063	1.60	2.028	51.51
.060	1.52	.750	19.05
.045	1.14	.450	11.43
.030	0.76	.425	10.80
.020	0.51	.312	7.92
.015	0.38	.300	7.62
.012	0.30	.180	4.57
.010	0.25	.175	4.45
.008	0.20	.156	3.96
.005	0.13	.125	3.18
.003	0.08	.078	1.98
.001	0.03	.073	1.85
.000	0.00	.070	1.78
IN	MM	IN	MM

CONVERSION TABLE



THIS DRAWING IS A CONTROLLED DOCUMENT.

DIMENSIONS: INCHES	TOLERANCES UNLESS OTHERWISE SPECIFIED:	0. PLC ± -	1. PLC ± -	2. PLC ± -	3. PLC ± .005	4. PLC ANGLES ± -
--------------------	--	------------	------------	------------	---------------	-------------------

APPROVED: D. CLARK	DATE: 16JAN96	NAME: MTA-156 HEADER ASSEMBLY, FRICTION LOCK, STRAIGHT, .045 SQUARE POST, TIN PLATED, 13 POSITION, OMITTED POST, SPECIAL
SIZE: A1	SCALE: 5:1	WEIGHT: -

CUSTOMER DRAWING

7	644950-1
POST NO. OMITTED	PART NUMBER